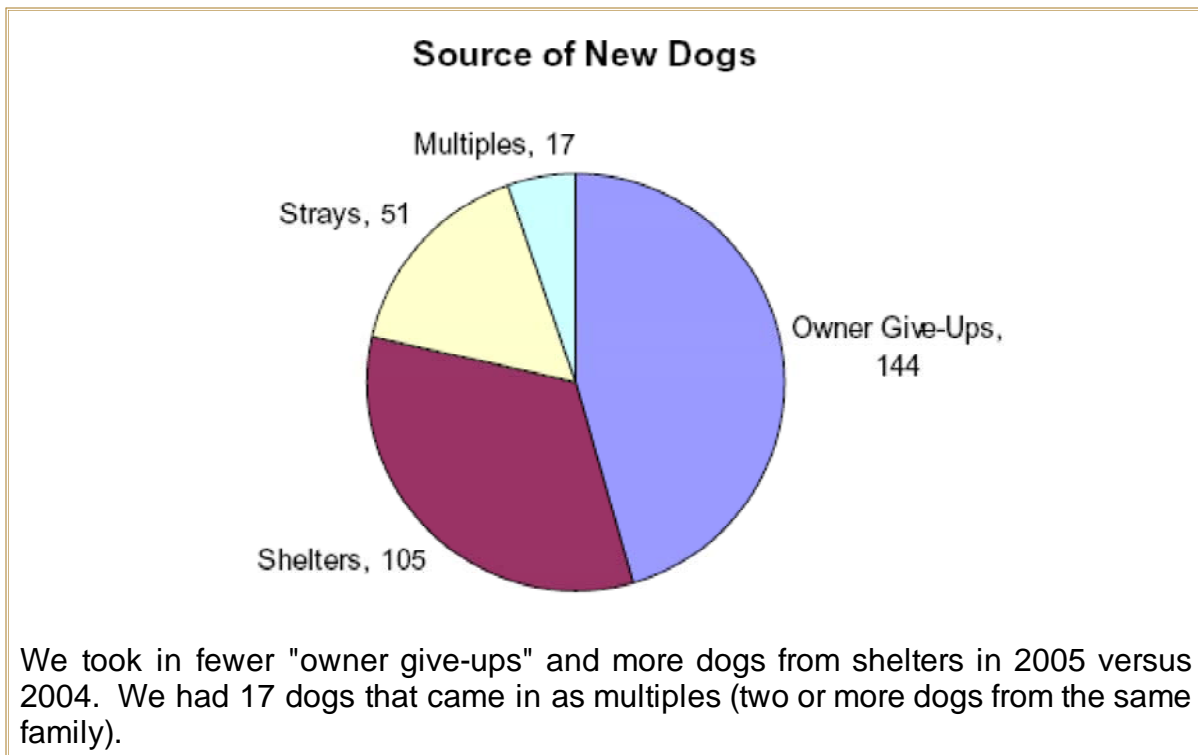


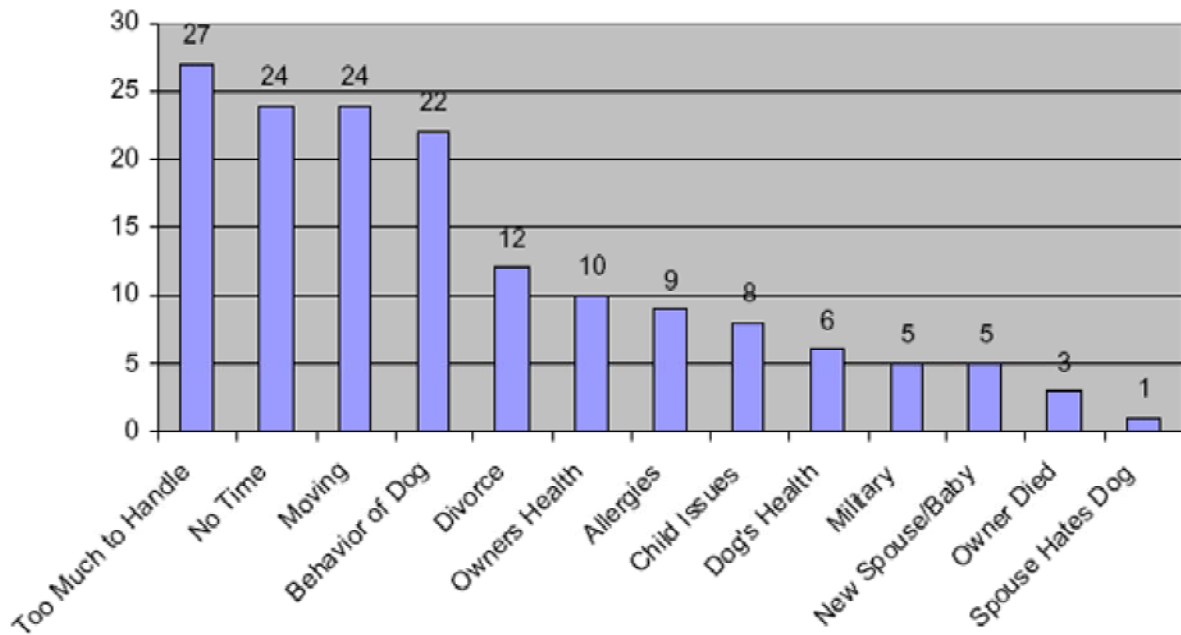
GRREAT By the Numbers - 2005

The statistics below provide an overview of GRREAT, based upon the committee reports provided for the year 2005 at the Annual GRREAT Board Meeting on January 28, 2006.

12	Dogs returned from prior years
12	Most dogs fostered by a single family
47	Homes fostering more than 1 dog
87	Percentage of dogs that had microchips implanted
115	Number of foster homes in 2005
224	Total dogs adopted
262	Dogs accepted into the rescue (a 33% increase over 2004)
274	Total intake (includes 12 puppies born into the rescue)
576	Adoption applications received
20,000	Monthly visitors to the GRREAT web site.

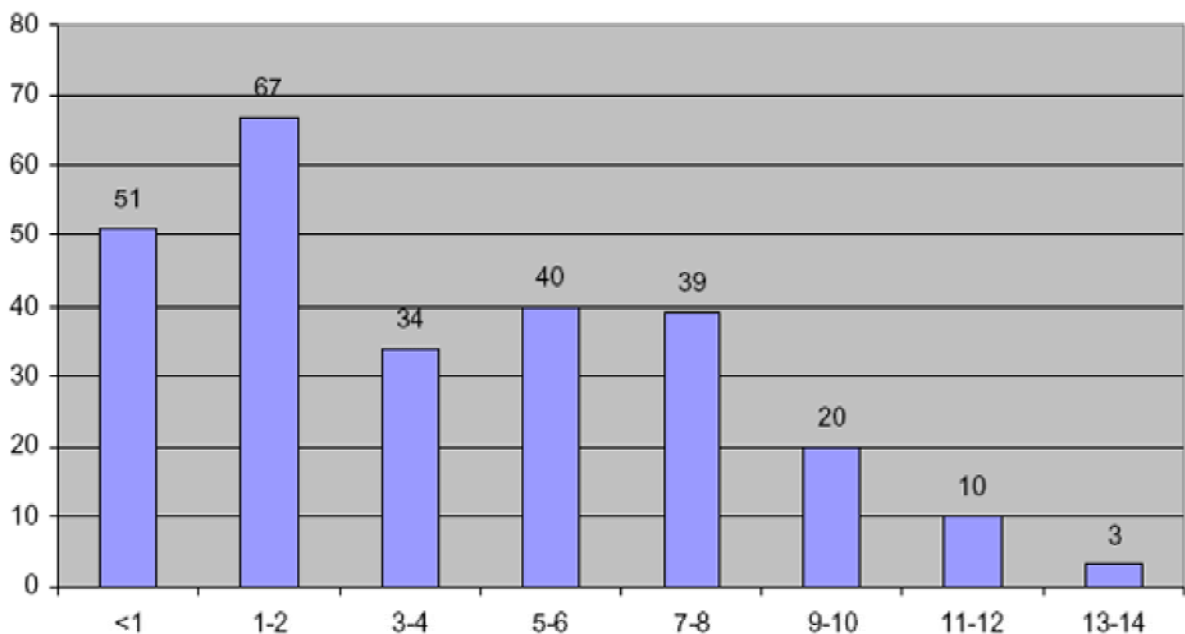


Reasons for Owner Give-ups



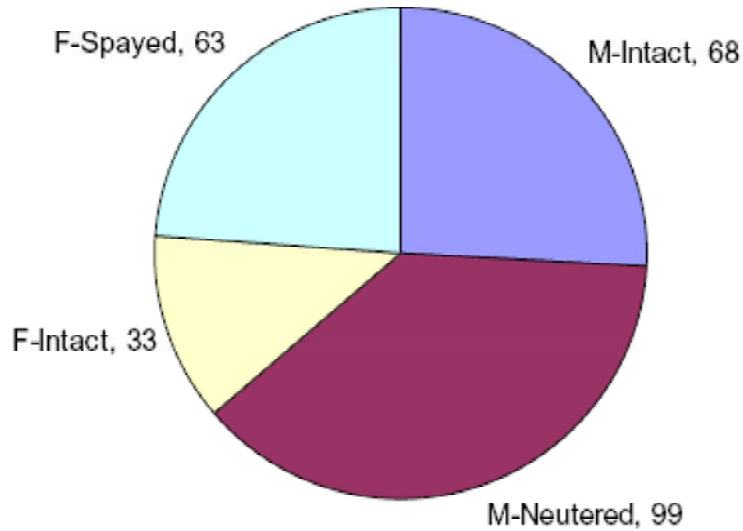
“Too much to handle” became the top reason for owner give-ups in 2005, with “No Time” and “Moving” as close seconds. The dogs classified as “Too Much to Handle” and “Behavior of Dog” made up a large percentage of the 1 to 2 year old dogs.

Dogs Accepted Into Rescue by Age



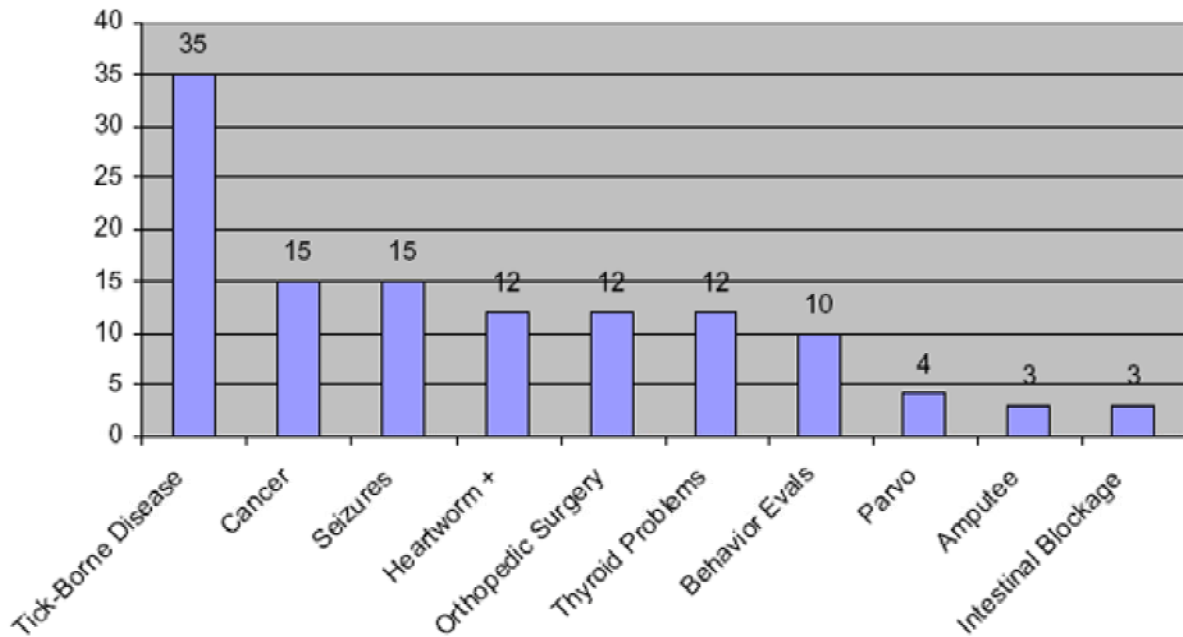
Our mix of younger to older dogs narrowed slightly in 2005 versus 2004, with 58% of new dogs age 4 or younger (versus 60% in 2004) and 27% of new dogs 7 or older (versus 25% in 2004). Twelve dogs were born into the rescue.

Dogs Accepted Into Rescue by Gender



Male dogs still represent the majority of new intakes, at 64%. The percentage of dogs that were spayed or neutered when they came to GRREAT increased from 56% to 62%. All dogs are spayed or neutered prior to adoption.

Medical Problems on Intake



Tick-borne diseases, such as Lymes Disease is becoming an increasing problem in the dogs we accept into rescue. There was an increase in the dogs we saw with cancer, and we had four dogs that came in with Parvo, two of which survived.

Income Sources 2005

